

lottoCat All-in-One Lottery POS

LottoCat a stylish, high-performance, user-friendly, multi-functional and all-in-one POS terminal designed for retailer operations. LottoCat makes lottery operation easy by conducting multiple tasks such as ticket sales, online validation, prize payout and other value-added services.

LottoCat can be integrated to eGame proprietary lottery system - M.Lottery or other third-party lottery systems via various communication protocols for secured lottery transactions. Designed for counter-top and heavy-duty configuration, it is ideal for lottery retailers in fixed locations like betting centers, supermarkets, convenience stores, banks or post offices.



Lotto • Instant Ticket Games • Bingo • Keno
Sports Totalizators • Chance (Digit Lottery)

A mighty partner for all

Supporting sales and payout functions in a single unit for multiple games: Lotto, Instant Games, Bingo, Keno, Sports Totalizators, Chance (Digit Lottery), etc., LottoCat is available in modular or integrated configurations. The durable all-in-one terminal is integrated with the following peripherals for the comprehensive lottery sales and payout operations:



- 10.4" Touch-screen
- Easy-loading thermal printer - accepts paper rolls of 58/80mm width
- Optical Mark Reader – accepts play-slips of multiple games
- 2 x USB ports
- Magnetic Strip Reader (optional)
- Keypad (optional)
- Smart-Card Reader (optional)
- Contactless Card Reader (optional)
- Customer LCD Touch Panel (optional)
- 1D or 2D Barcode Scanner (optional)
- Fingerprint Reader (optional)

Meeting the industrial standard, LottoCat all-in-one POS is easy for maintenance.

Specifications



System Unit

- Processor – Intel Atom N270 1.6GHz
- Memory – 1GB
- HDD 160GB
- 1 x RJ-45 LAN port
- 2 x USB port
- Operating System – Microsoft Windows (sold separately)
- Communication – 10/100 LAN, Wi-Fi 802.11 b/g/n (Optional), GPRS (Optional)



Touch Screen

- 10.4" TFT LCD Touch
- 800 x 600 pixels
- 350cd/m²



Payment Components

- Magnetic Card Reader (optional) – ISO 7811/2 ; Track 1,2,3
- Smart Card Reader (optional) – ISO 7816 EMV compliant
- Contactless Card Reader (optional) – ISO 14443 and Mifare cards compliant



Printer

- Technology – Thermal
- Paper Width – 57mm or 79mm
- Print Speed – 170mm per second
- Paper roll diameter – 80mm



Optical Mark Reader

- Marks supported – Black/ Dark Blue Pencil, Signing Pen, Ball Pen
- Scanning speed – 600mm per second
- Processing speed – 45 to 60 sheets per minute
- From size – Width 78.5mm, Length less than 300mm



Other Peripherals

- LCD Customer Display Panel / Touch Panel (Optional)
- 1D or 2D Barcode Scanner (Optional)
- Keypad (Optional)
- Fingerprint Reader (Optional)



Power Supply

- 110-240V ac, 50-60Hz



Dimension

- 440mm (D) x 280mm (W) x 250mm (H)
(Base unit excluding all optional items)



Weight

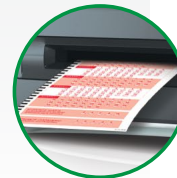
- 9kg (Base unit excluding all optional items)



LCD Touch Panel and
Optional Customer Display



Optional integrated
Magnetic Card, Smart Card
and Contactless Card Reader



Optical Mark Reader for
processing playslips



Integrated fast thermal
printer with easy-loading
mechanism



All rights reserved.
Specifications and external appearance subject to change without prior notice.